



Technology that excites
Diode-Pumped Solid State Laser
DPL*Genesis* Marker
DPL*Magic* Marker
Edition 2

Diode pumped solid state laser

Provides permanent and resistant marking

innovative

Using the most modern technologies makes the cab laser marking systems superior in its class; setting new standards in the field of laser marking. Due to the high beam quality and pin-point accuracy the cab lasers ensure markings on the most diverse materials.

air-cooled

Modern switching technology reduces losses so significantly that cumbersome cooling methods are not necessary. The DPLMagic Marker and the DPLGenesis Marker incorporate thermo-electric cooling.

economic

Due to an average power consumption of only 200 Watts, which means less than 2 cents (0,02 EUR)/hour, the energy costs are very low.

precise

The TEM 00 high laser beam quality provides markings up to a resolution of 1000 dpi: the prerequisite for 2D miniature barcodes.

fast

The scanning head FireSCAN delivers accuracy for small fonts and precise markings and guarantees high positioning accuracy of the laser beam.

robust

The laser marking systems are designed for long service for industrial and multi-shift operations.

service and user-friendly

The integrated diagnostics permanently shows equipment status on the display.

Components as well as the system itself can be quickly and easily exchanged.



Marking Software

MagicMark programming software offers customer user interface possibilities under "Visual Basic for Applications" utilizing the 32-Bit technology. The user can choose between a "drag and drop" and a freely programmable software version. The software is optionally operated under Windows 2000 (SP3), Windows XP or Windows NT (SP4). An extensive range of commands for the laser and scanning head meets even complex demands of marking. The possibility of free programming enables the creation of customer specific user interfaces which enables to adapt the screen masks individually to the needs of the customer. The integrated preview function of the marking software assists the user in his tasks.

Periphery

Laser Safety Housing

Offered as a desktop version with a working area of 400 x 300 mm

Industrial laser safety housing

Optional accessories and a working area of 900 x 400 mm

Linear NC axis

to adjust laser focus depending on the height of work piece.

NC Turning axis

For cylindrical bodies

Label Marker

For creating labels directly from a continuous label roll

Type Plate Marker

On customer's request

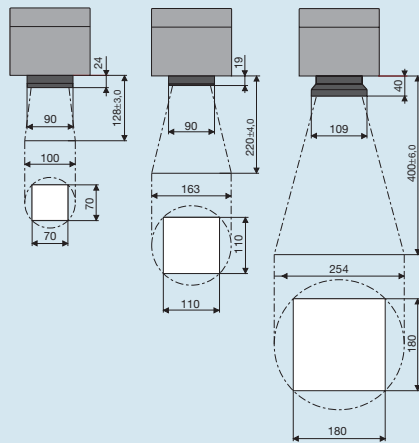


Technical data and delivery program

Laser source	DPLMagic Marker	DPLGenesis Marker
cw power	3 Watt	7 Watt
Solid state laser	diode pumped Nd:YAG laser system	
Wave length	1,064 nm	
Beam mode	TEM ₀₀	
Pulse width	20 - 50 nsec	
Pulse frequency	0.1 - 50 kHz	
Pilot laser	650 nm / 1 mW	
Laser protection class	4	

Scan head	
Turnable	in both directions by 100°
Scan speed	up to 5 m / sec Δ 350 characters/sec of 1 mm height, Single-Line-Font

Plano-spherical lens F-Theta	100	163	254
Focal length	128 \pm 3 mm	220 \pm 4 mm	400 \pm 6 mm
Marking area \square	70x70 mm	110x110 mm	180x180 mm
Spot ϕ	25 μ m	35 μ m	50 μ m
Δ Resolution	1.000 dpi	725 dpi	500 dpi



Interfaces	
PC interfaces	Serial RS-232 C, Parallel Centronics
Laser Control Interface for	Laser operation ready, Start/End of marking
	Laser-Emission, Shutter/Chamber-Interlock

Operation and weight		
Power supply	Power inlet	
Operating voltage	100 - 240 VAC / 50-60 Hz	
Power consumption	max. 450 Watt	max. 550 Watt
Fuse	5 AT at 110 VAC und 2.5 AT at 230 VAC	
Operating temperature	15 - 35°C	
Humidity not condensing	30 - 85%	
Weight	15 kg	20 kg

DPLMagic Marker



DPLGenesis Marker



Part No.	Description	Plano-spherical lens
5523214	Marking laser DPLMagic Marker 100	100
5523215	Marking laser DPLMagic Marker 163	163
5523216	Beschriftungslaser DPLMagic Marker 254	254
5524049	Marking laser DPLGenesis Marker 100	100
5524050	Marking laser DPLGenesis Marker 163	163
5524051	Marking laser DPLGenesis Marker 254	254

Marking software

Hardware requirements	Pentium III-PC with 233 MHz and 64 MB RAM CD-ROM drive, serial, parallel interface 100 MB free hard drive capacity
Operating systems	Windows 2000® (SP3), Windows XP® or Windows NT® (SP4)

Characters

Characters formats	True-Type-Fonts filled, unfilled and Single-Line-Fonts, freely scalable
Font directions	Stretched, compressed, mirror inverted and rotated
Font width	Compress and stretch

Graphics

Graphic elements	Line, rectangle, rounded rectangle, rectangle filled, circle
Graphic formats	HPGL, DXF, DWG

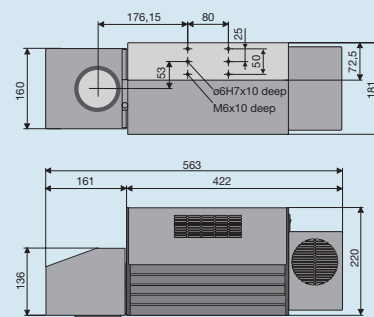
Barcodes

Linear barcodes	2 of 5 Code 39, Code 93 Code 128, A, B, C	Codabar EAN 8, 13 EAN/UCC 128
2D barcodes	Data Matrix, PDF 417	
	All barcodes can be freely scaled, optionally with test code, inverted and start/stop code.	

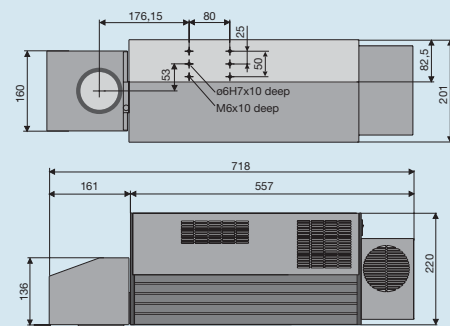
Additional features

	Serial number, date, time
	Extensive help menus and functions
	Possibility to progress variables and sub-routines
	Complete input of data and text strings (access by means of OLE to Access data bases and Excel tables)
	Filing of complete procedures and parameters in special menus, i.e. data bases
	Programmable laser parameters
	Connection to industrial control units, f.ex. axis controllers for X, Y, Z, or ROT axis.

DPLMagic Marker



DPLGenesis Marker



Contents of delivery: Marking laser with scan head and Plano-spherical lens, power supply cable, interface cables serial and parallel, marking software MagicMark, operating and programming manual.

All specifications about delivery, design and technical data are given to the best of our current knowledge and are subject to change without prior notice.

Made in Germany

Development and Production



For more than 25 years cab has been developing and manufacturing product identification equipment for industry, trade and service markets

Continuous new requirements initiated by the market's complex demand influence the design and innovation of future products. Skilled engineers concentrate on qualified service for meeting the customer's demands.

Our products are manufactured in Germany in our own facilities according to ISO 9001. This assures quality management from raw material testing through every step of production right up to the finished product.

Headquarter **Germany**

cab-Produkttechnik
GmbH & Co KG

Postfach 1904
D-76007 Karlsruhe
Wilhelm-Schickard-Str. 14
D-76131 Karlsruhe

Phone +49 721 6626-0
Fax +49 721 6626-249

www.cabgmbh.com
laser@cabgmbh.com

cab representatives

France: cab technologies s.à.r.l.
F-67350 Niedermodern

Spain: cab España S.L.
E-08304 Mataró (Barcelona)

USA: cab Technology Inc.
Tyngsboro MA, 01879

Russia: OOO cab Technology
RUS-123001 Moscow

South Africa: cab Technology (Pty.) Ltd.
2125 Randburg

Representatives in other countries on request.