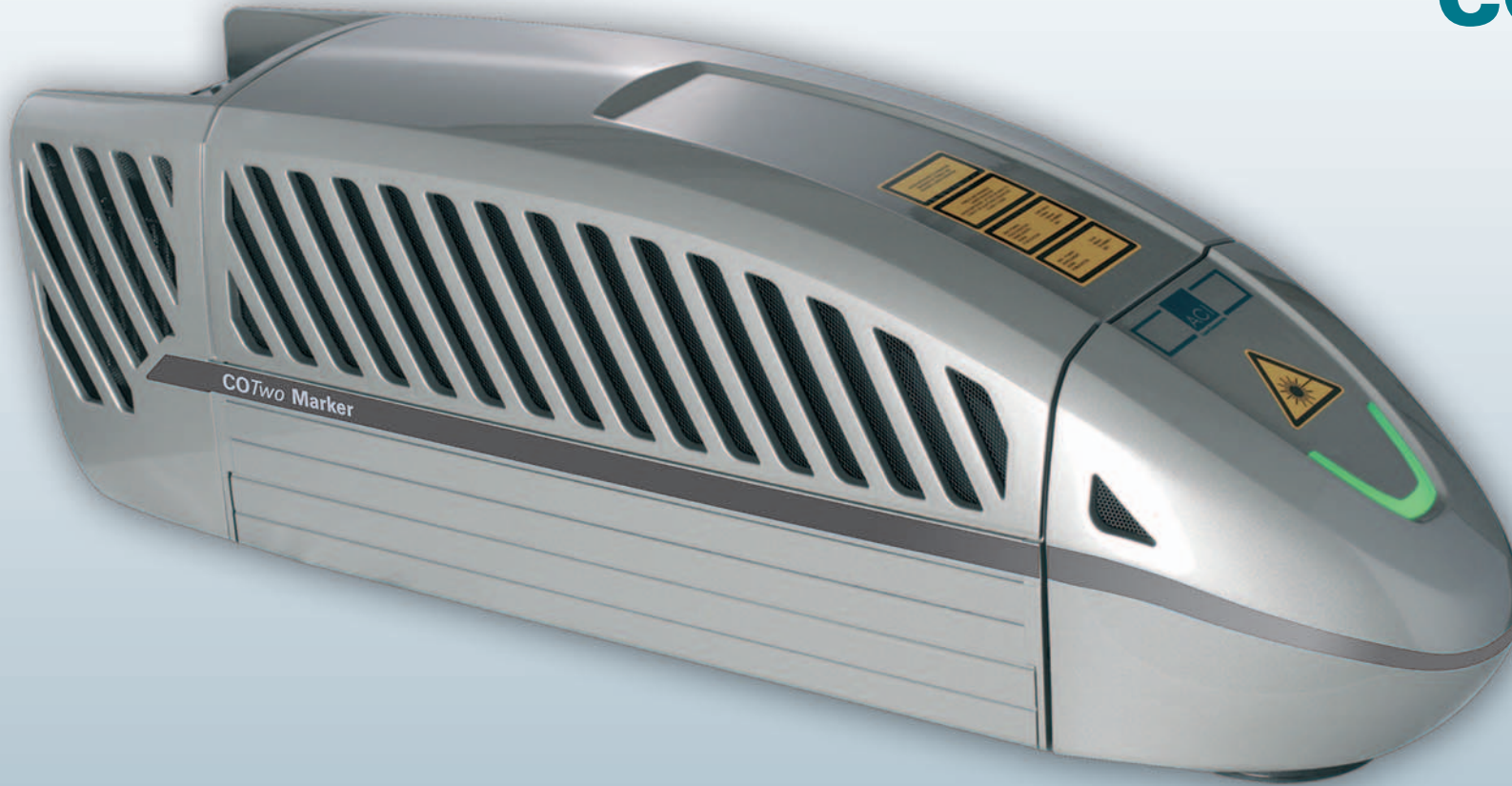


CO₂ Laser

CO₂Two Marker
30W



ACI Laser GmbH has created and developed a CO₂ Laser system to comply with important market demands. Now, the integration of all optical, electronic and mechanical components in one enclosure is the result. Alternative solutions for water cooling and costly

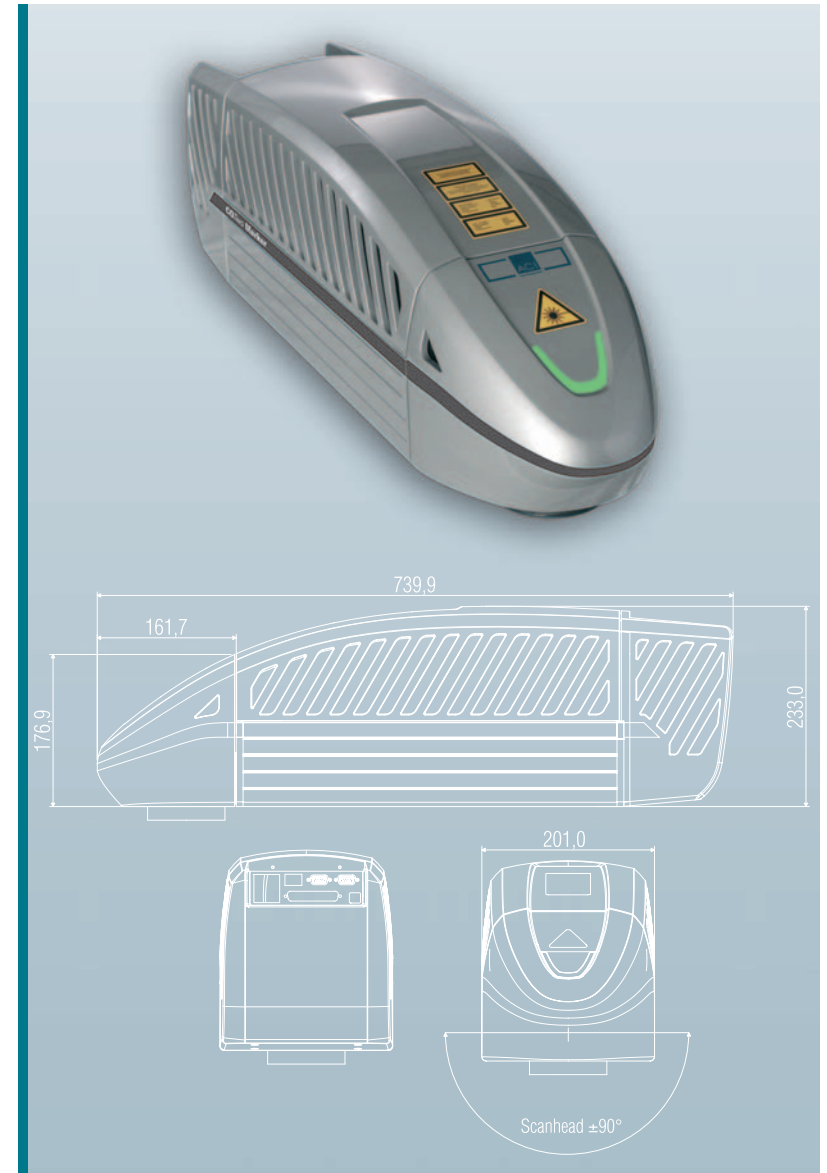
electrical supply units developed by ACI make laser marking more efficient and affordable. The integrated air cooling system allows the CO₂ Laser a steady operation and reduces costs, space and maintenance. This consequent development results in an enormous

reduction of operation costs. The CO₂ Laser system generates up to 30W output power and is suitable for the most applications of marking of wood, glass, leather and PCB-boards.

Technical Data CO₂ Marker

Laserunit	CO ₂ sealed-off source			Interfaces lasersystem	PC -interface:
Wavelength	10.600 nm				· USB 2.0
Pilot laser	integrated, 650 nm / 1 mW				Laser control interface for:
Power	30 W @ 50 % power-on time 20 W @ 75 % power-on time				· Ready for operation or fault signals · External Shutter-Interlock · External Shutter warning light · 8 digital input interfaces · 8 digital output interfaces · Differential input for „marking on the fly“ ⁽²⁾
Beam quality	TEM ₀₀ , M ² <1,2			Power supply and consumption	Power supply:
Laser protective class	4, optional Laser protective class 1				· standard appliance outlet with microfuse
Control unit	<ul style="list-style-type: none"> · Integrated control unit in the laser source · Power supply module · Multi-processor system for system control and data processing · Integrated scanner control · Integrated HF-driver · Connection of all components via a bus system 			Operating temperature	Connection parameter:
Scan unit	Galvanometric scanner: FireScan® Scanning speed <20 m/sec Focal lens: optional				100 -240 VAC / 16 A / 50 -60 Hz
Spot diameter ⁽¹⁾	Focal lens 100 100	Focal lens 150 125	Focal lens 250 150 [µm]		Power consumption (typ.): 300W, max. 600W
Size of marking field	70 x 70	110 x 110	180 x 180 [mm x mm]	Humidity (relative)	Cooling:
Supply unit	Laser source with integrated control unit, An external supply unit is not required				15 °C – 35 °C [59 °F – 95 °F]
Cooling	Integrated air cooling, External cooling supply is not required			Weight	Dimensions
System requirements	IBM-compatible PC, Pentium 4, >2 GHz, Main memory: 512 MB Operating system: WINDOWS 2000/XP Drives: hard disk drive, CD-Rom PC-interfaces: USB 2.0				
				Options	Hardware:
					Software:
					· „Marking on the fly“ DMC and EAN decoding software module

(1) Spot diameter at the work piece. Deviations because different materials are possible. (2) Optional



ACI 06.2007, this is subject to alterations without prior notice in case of mistakes or technical changes. All designated trademarks and brands are the property of their respective owners. · LANDSIEDEL | MÜLLER | FLAGMEYER www.l-m-1.de